

Simple Operations



○ HZL 353ZR-A

21
Built-in Sewing Patterns



○ HZL 355ZW-B

26
Built-in Sewing Patterns



○ HZL 357ZP-C

32
Built-in Sewing Patterns

Quality Performance



HZL 353ZR-A



HZL 355ZW-B

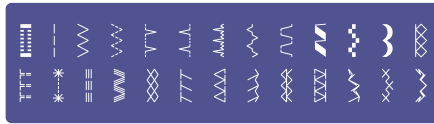


HZL 357ZP-C

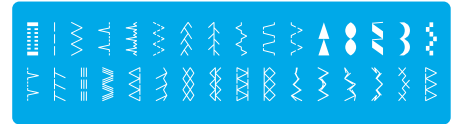
21 Built-in Sewing Patterns



26 Built-in Sewing Patterns

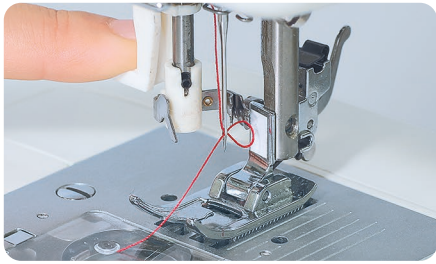


32 Built-in Sewing Patterns



Automatic Needle Threader

The Automatic Needle Threader easily threads the needle without eyestrain and allows you to start sewing quickly.



Drop Feed

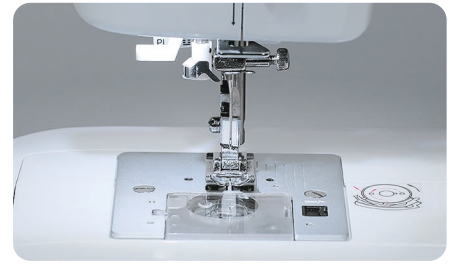
You can lower the feed dog for sewing button or free-motion quilting by simply moving the lever.

* Quilting foot is an optional part.



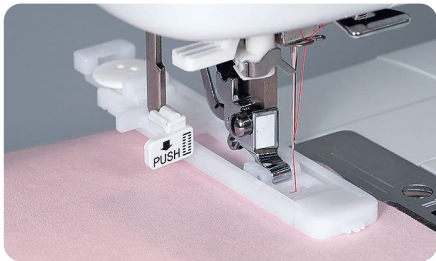
White LED Light

Brightens the needle entry area. LED light will not heat up even during long operations.



Automatic One-Step Buttonholing

By placing button on the buttonhole foot, the machine conveniently sews buttonholes automatically according to the size of the button.



Presser Foot Pressure Adjustment

Presser foot pressure can be adjusted for better sewing results according to the type of materials to be sewn.

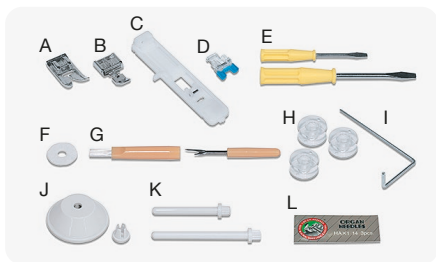


Free Arm and Accessory Box

The Auxiliary Box slides off for the free arm sewing. Also standard accessory parts can be neatly stored in the Auxiliary Box.

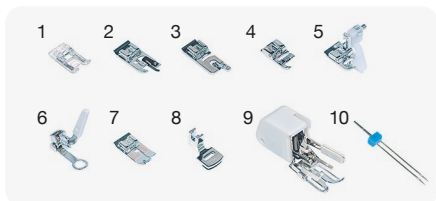


Standard accessories



- A. Standard presser foot
- B. Zipper foot
- C. Buttonhole foot
- D. Button sewing foot
- E. Screwdriver (L&S)
- F. Spool pin felt
- G. Seam ripper/brush
- H. Bobbin (3x)
- I. Quilt guide
- J. Spool cap
- K. Auxiliary spool pin
- L. Pack of needles (3x)
- M. Hard case

Optional accessories



- 1. Decorate stitch foot
- 2. Overcasting foot
- 3. Rolled hemming foot
- 4. Cording foot
- 5. Blind stitch foot
- 6. Quilt foot
- 7. Straight stitch foot
- 8. Gathering foot
- 9. Walking foot
- 10. Twin needle

Specifications

Sewing Speed	Max. 750 s.p.m.
Stitch Length	Max. 4mm
Zigzag Width	Max. 7mm
Lift of the Presser Foot	2-step lifter Max. 9mm
Needle	HA x1 #9-#18
Dimensions	410 (W) x 308 (H) x 177 (D) mm
Weight	7.1kg/15.7lb (Machine only)
Hook	Horizontal Rotary Hook

JUKI

JUKI CENTRAL EUROPE Sp. z o.o. ul. Polezki 21, 02-822 Warsaw, Poland

Tel.: +48 22 545 04 00 / Fax: +48 22 545 04 11

www.juki.pl / www.facebook.com/JukiSewlt / e-mail: juki@juki.pl